



Water Heater

WH0802 / WH0802B

INSTALLATION & USER INSTRUCTIONS

Thank you for purchasing this Whale® product.

For over 40 years Whale has led the way in the design and manufacturer of freshwater and waste systems including:- plumbing, faucets, showers and pumps for low voltage applications. The company and its products have built a reputation for quality, reliability and innovation backed up by excellent customer service.

For information on our full product range visit: www.whalepumps.com

CONTENTS

1. Principles of Operation
2. Specification
3. Application
4. Warnings
5. Parts List
6. Instructions for Installation
7. Instructions for Use
8. Maintenance
9. Trouble Shooting
10. Winterising
11. Service Support Details
12. EU Declaration of Conformity
13. Patents and Trademarks
14. Warranty

LIST OF IMAGES

- | | |
|---------|-----------------------------------------------|
| Fig. 1 | Components drawing |
| Fig. 2 | Dimensions – side view |
| Fig. 3 | Dimensions – top view |
| Fig. 4 | Dimensions – front view |
| Fig. 5 | Installation locating diagram |
| Fig. 6 | Cut out hole for flue |
| Fig. 7 | Flue dimensions |
| Fig. 8 | Reinforce flue hole |
| Fig. 9 | Flue sealing |
| Fig. 10 | Attaching flue box |
| Fig. 11 | Installation and securing of flue cover |
| Fig. 12 | Connect Water Heater to flue |
| Fig. 13 | Water heater position |
| Fig. 14 | Fitting the drain |
| Fig. 15 | Secure water heater to floor |
| Fig. 16 | Connect to the gas supply |
| Fig. 17 | Insert control panel |
| Fig. 18 | Secure control panel |
| Fig. 19 | Installed control panel |
| Fig. 20 | Connect 12V d.c.connector |
| Fig. 21 | Mains electrical connection |
| Fig. 22 | Mains connection |
| Fig. 23 | Connect cold water supply |
| Fig. 24 | Installed cold water supply |
| Fig. 25 | Connect hot water supply |
| Fig. 26 | Completed installation - Manufacturer version |
| Fig. 27 | Completed installation - Retail version |

1. PRINCIPLES OF OPERATION

The Whale® 8L Water Heater is a gas and electric storage water heater. The unique design has a 8.5L capacity hot water tank and incorporates versatile controls for low current draw or fast heat up settings. With robust insulation and no removable flue cover the Whale® Water Heater only requires minimal maintenance.

Read the following carefully before installation

2. SPECIFICATION

Model: **WH0802 / WH0802(B)**

Maximum dimensions inside RV: Height: 258mm, Width: 330mm, Length: 330mm, Dry Weight: 8.0kg

Nominal Water Capacity 8.5L

Gas: Butane 28-30mbar, Propane 37mbar - CAT I₃₊ (29/37)

Butane/Propane 30mbar - CAT I3B/P (30)

Classification of Storage Water heater: Type: C11 (Natural draft)

Nominal Heat Input: Gas 1.25kW

Standby Consumption Gas 98W

Nominal Heat Input Electric 1.5kW

Electric: 230V a.c. 50 Hz 750/1500W

Maximum Current a.c.: 6.5 Amps

Nominal Voltage: 12V d.c. (10.0V d.c. min. to 15V d.c. max.)

Maximum Current d.c.: 0.36Amps (0.01Amps on standby)

Maximum Water Supply Pressure: 190kPa (1.9 Bar)

Rated Pressure 300kPa (3.0 Bar)

Pressure Relief Valve Setting: 300kPa (3.0 Bar)

Maximum Caravan Side Wall Thickness: 47mm

Ingress Protection Rating: IPX1

Note: If connecting to mains water supply, a suitable water pressure regulator **must be** connected to ensure that the maximum supply water pressure does not exceed 190kPa (1.9 Bar).

Dry Storage Temperature: -20°C to 70°C

Maximum Water Temperature: Approx. 70°C

Typical heating up times from 15°C to 70°C: Gas and both electric elements approx. 15 min.

Two electric elements only approx. 24 min, Gas only approx. 33 min.

Whale's policy is one of continuous improvement and we reserve the right to change specifications without prior notice.

3. APPLICATION

The Whale® Water Heater has been designed for caravan, motorhome and mobile applications, and is suitable for small and medium sized recreational vehicles. The compact and lightweight 8L tank fits in confined spaces and has a greater power input for rapid heat up times.



This symbol indicates that this appliance is suitable for use in Leisure Accommodation Vehicles.



This symbol indicates that this appliance is **not** suitable for use in boats.

4. WARNINGS

Observe all warnings.



In the unlikely event of leaks in the gas system, or if there is a smell of gas:

- Extinguish all naked flames
- Switch off all appliances and do not operate any electrical switches
- Open windows and doors for ventilation
- Do not smoke
- Shut off gas connection

Get the system thoroughly checked by a Whale® Authorised Dealer.

The appliance **must not** be operated while the vehicle is being re-fuelled.

This appliance is not intended for use by persons (including children) with reduced physical, sensory or mental capabilities, or lack of experience and knowledge, unless they have been given supervision or instruction concerning use of the appliance by a person responsible for their safety. Children should be supervised to ensure that they do not play with the appliance.

Ensure the caravan water system including water heater is full of water, and the vehicle is level before operating.

This appliance must be fully drained if there is a risk of frost. Frost damage will not be covered by warranty. The water temperature cannot be adjusted. It is automatically set to approximately 70°C and controlled by the PCB to prevent bacteria growth. To avoid scalding, the temperature of the hot water supplied to the taps and showers should be controlled. **Do not** use the water as drinking water.

Any alteration to the appliance, including flue plate, use of non-Whale® spare parts/accessories and non-observation of the installation and operation instructions shall lead to cancellation of the warranty and exclusion of liability claims and results in it becoming illegal to use the appliance.

Please note that incorrect installation or use of non-original Whale® parts may invalidate the warranty. It also becomes illegal to use the appliance if incorrectly installed, and in some countries this even makes it illegal to use the vehicle.

5. PARTS LIST

	WH0802	WH0802B
Water heater	1	1
Flue assembly inc. 6 screws	1	1
Control panel inc. 4 screws	1	1
3.5m control panel extension cable	1	
Pressure relief / Drain valve	1	1
1 Male adaptor 3/8" flexible hose plumbing fitting	1	
2 Male adaptor 1/2" flexible hose plumbing fitting	1	
Warranty registration card	1	1
Instruction manual including installation templates	1	1
Instruction manual storage pocket, with adhesive fixing strip	1	

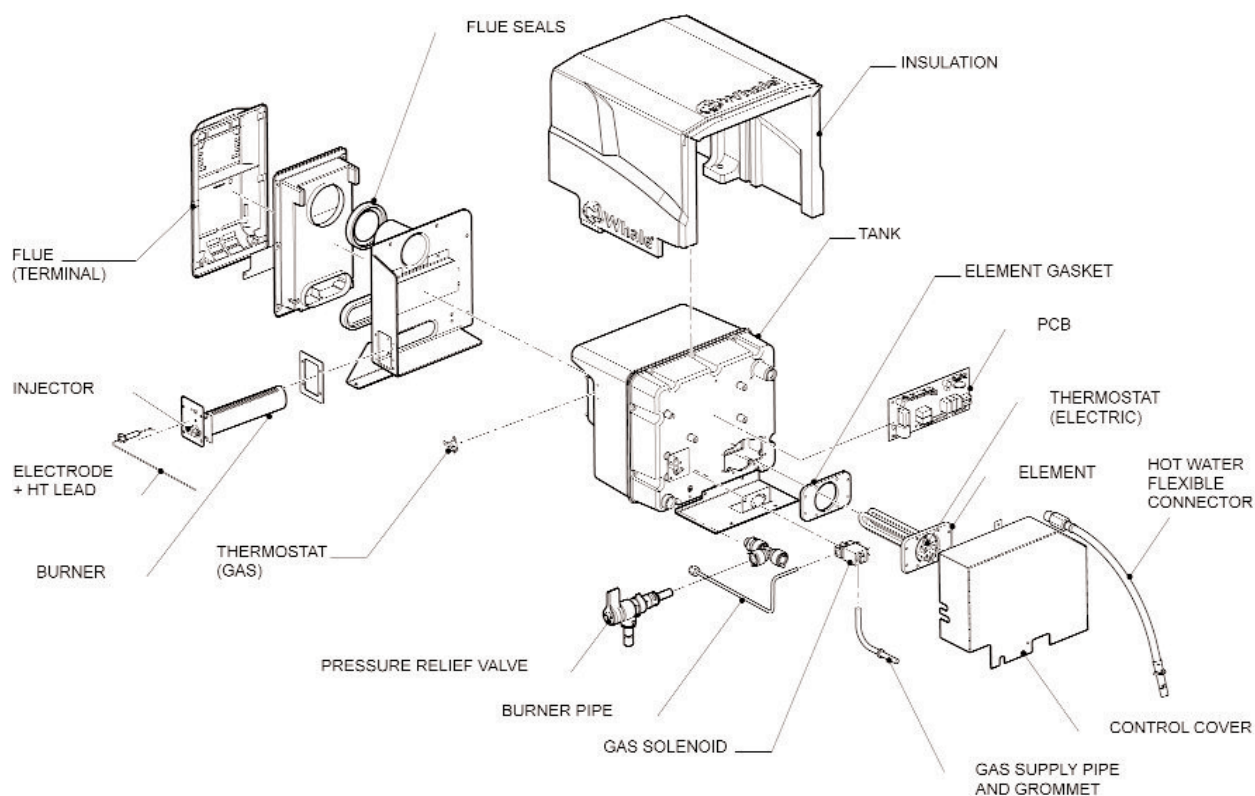


Fig.1

6. INSTRUCTIONS FOR INSTALLATION

To the Fitter:

Before installation, ensure the appliance has been supplied in good condition and **if damaged, do not install and contact Whale® Support +44 (0)845 217 2933.**

A competent person must install the appliance in accordance with the appliance installation instructions. This appliance is for use with LPG (see appliance data plate) and mains electricity (230V a.c.). Check that the product is suitable for the intended application. In particular, the installer must check the compatibility of the data plate information with the LPG supply requirements of the vehicle. Follow these installation instructions and ensure all relevant personnel read the points listed below. Also ensure that these operating instructions are passed on to the end user.

Please note: The appliance should be installed in accordance with any relevant regulations in the country where the appliance is installed. For this appliance in Europe the standard is BS EN 1949:2002 "Specification for the installation of LPG systems for habitation purposes in leisure accommodation vehicles and in other road vehicles".

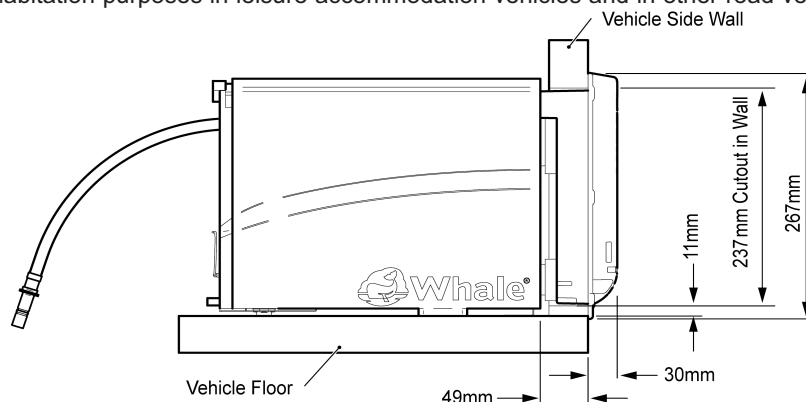


Fig. 2

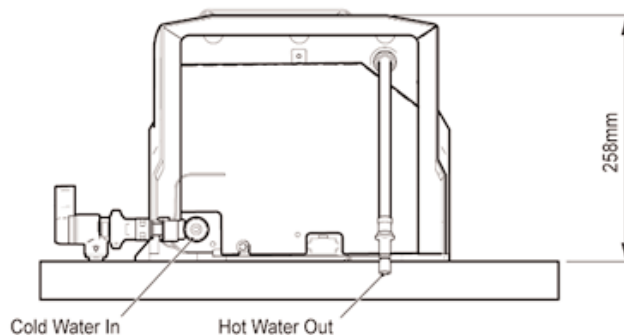


Fig. 3

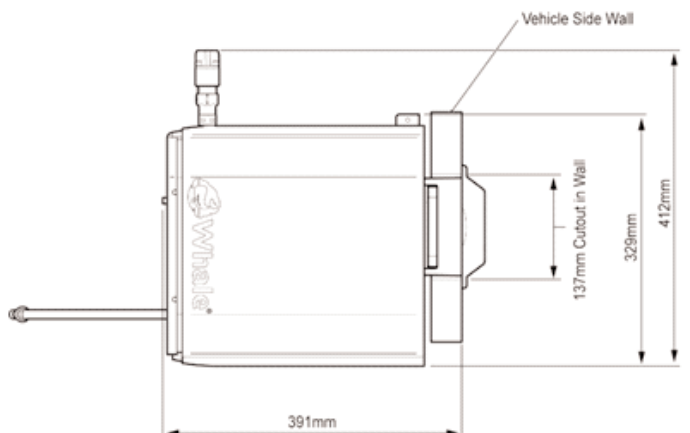


Fig. 4

Step 1 Find suitable location for water heater installation

Consider the following 5 points:

- For weight distribution in caravans, aim to position the Water Heater as near to the axle as possible. You must avoid locating at the very rear and preferably avoid the very front of the vehicle.
- Ensure that the position allows access for servicing the Water Heater.
- In selecting the Water Heater position, ensure that the flue will be located on a flat and exposed outside surface, avoiding trim strips.
- Ensure the pressure relief / drain valve discharge pipe can be located through the floor without fouling chassis members etc
- Only the supplied flue terminal is permitted to be used and **must not** be positioned within 300mm of a refuelling point or fuel tank breather outlet or any ventilator from the fuel system(s). The flue terminal **must not** be fitted within 300mm of a ventilator for the living space or an opening part of a window.

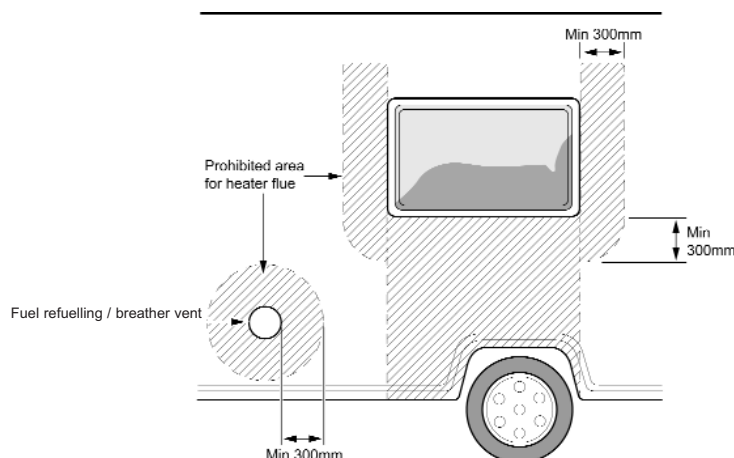


Fig. 5

The flue terminal may be positioned vertically below an opening part of a window if the appliance is fitted with an automatic shut-off device to prevent operation when the window is open. It must also be a minimum of 300mm below the window.

Step 2 Cut out hole for flue

See the flue template (also supplied with this heater).

Position template on the inside of the wall with side 'A' visible, then drill hole at centre position marked 'X' on the template.

Position the template on the outside of the wall with side B visible, locate over the drilled position hole 'X', and ensure the template is level.

Ensure that the flue outline is flat to the wall and level, avoiding trim strips etc. If the flue needs to be mounted higher, the heater can be mounted on a board to raise its height, as long as there is enough space to do so.

Drill four 6mm corner holes and cut aperture using flue template as a guide.

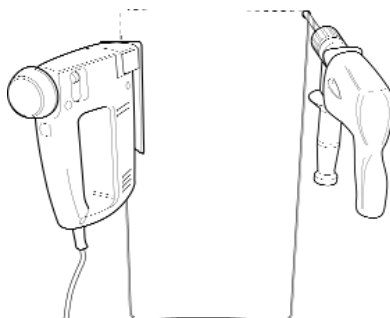


Fig. 6

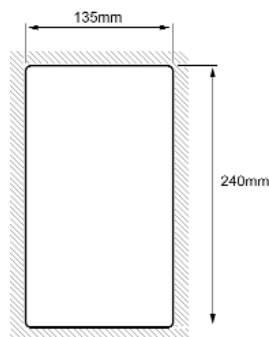


Fig. 7

Reinforce the cut out with wooden batons (minimum 20mm wide). This may require insulation in the wall to be removed.

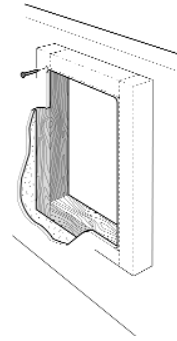


Fig. 8

Step 3 Attaching the flue to the caravan

Apply sealant to seal the flue on the caravan side wall of the flue sealing face, ensuring each screw hole is surrounded by sealant. Secure flue with the 6 screws (No. 8 x 3/4") provided and remove excess sealant.

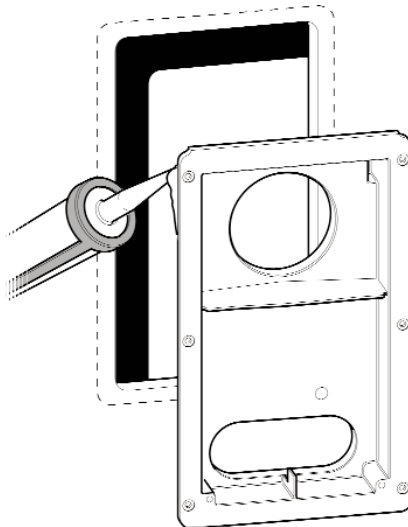


Fig. 9

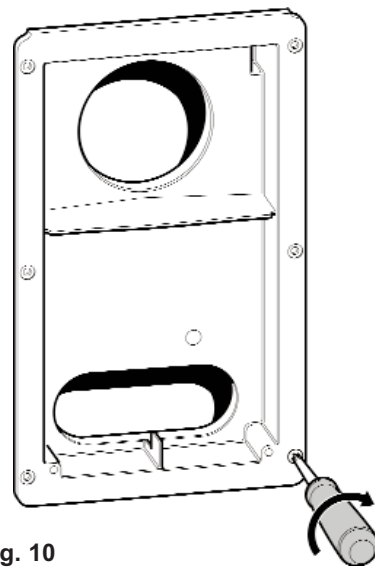


Fig. 10

Step 4 Attaching the flue cover

Clip the top of the flue cover onto the back box and secure with two screws (No.6 x 1/2") provided.

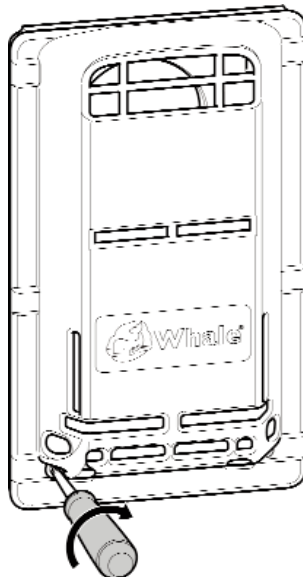


Fig. 11

Step 5 Connect water heater to flue

Set water heater on the floor and slide fully into flue as shown (see Fig. 12).

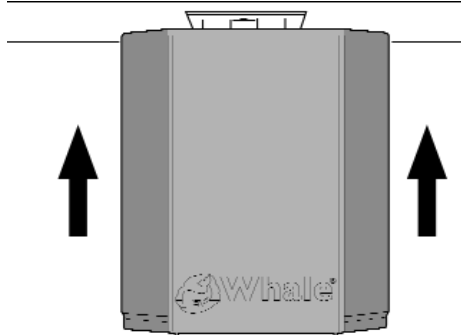


Fig. 12

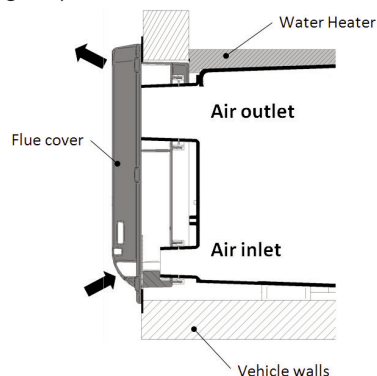


Fig. 13

Step 6 Fitting the drain pipes (see Fig. 14)

With the Water Heater in place on the floor, mark a location for the pressure relief / drain valve discharge pipe to come through the floor. Carefully remove the heater and drill a hole in the floor, minimum diameter 20mm, ensuring that there are no obstructions on the underside of the vehicle i.e. gas pipes, chassis members etc. Refit the heater, inserting the discharge pipe in the hole and ensure it is left open to the atmosphere at all times.

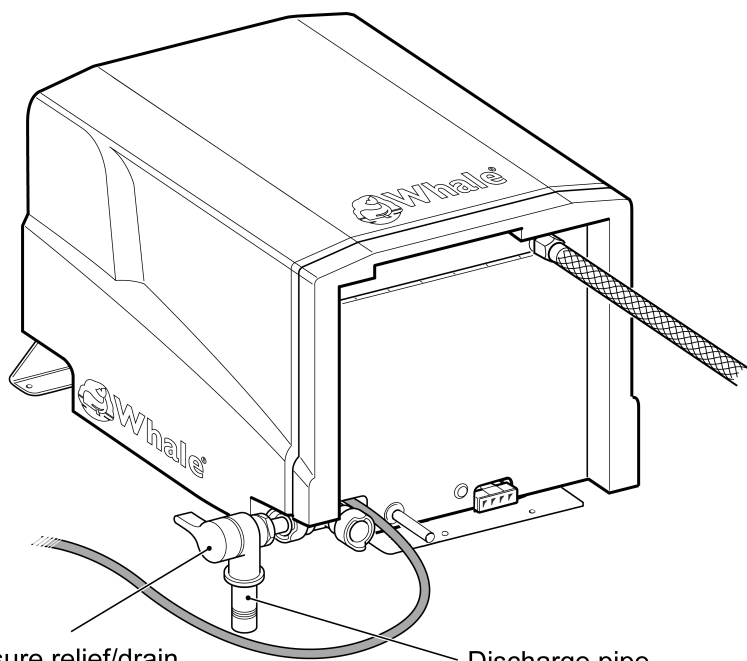


Fig. 14

Pressure relief/drain
valve

Discharge pipe

Step 7 Secure heater

Secure Water Heater to the floor using the front and rear mounting plates with 3 screws (No. 8 x 1 ¼") provided (see Fig. 15)

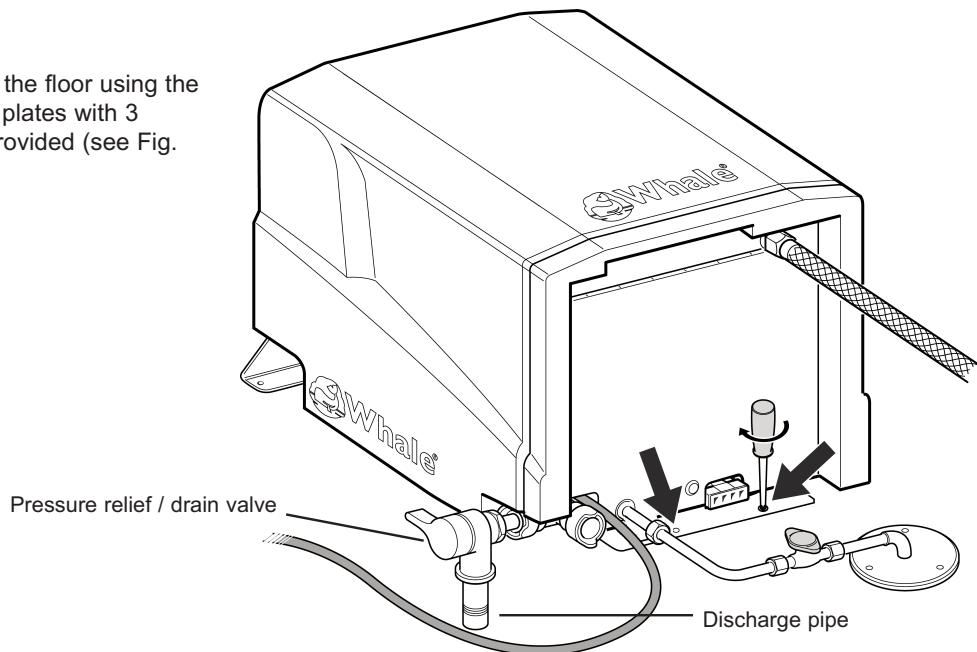


Fig 15

Step 8 Connect to gas supply (see Fig. 16)

Note: Ventilation must comply with relevant local requirements e.g. EN 721. Valve and connection are not part of the kit.

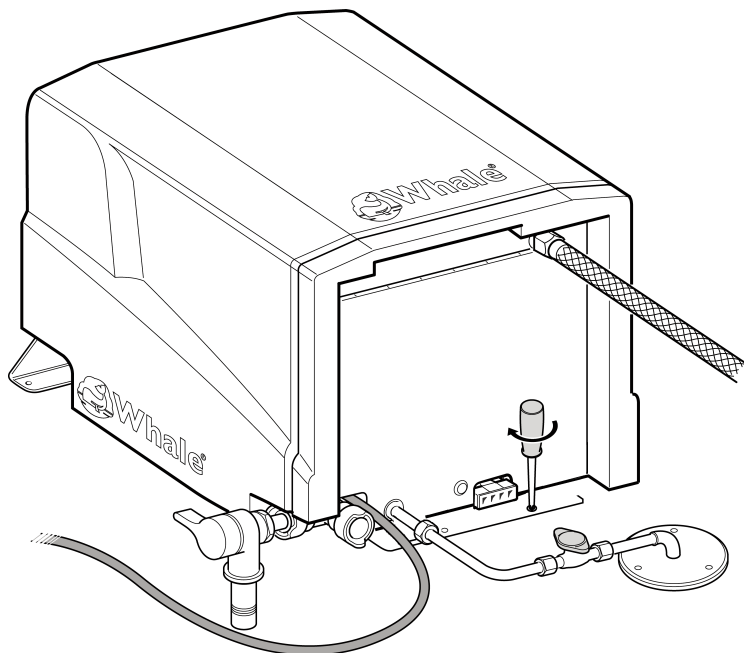


Fig. 16

The appliance should be installed in accordance with the installation instructions and comply with any relevant regulations in the country where the appliance is installed.

Check the gas pipe of the heater and the main gas supply pipe to ensure it is clear from dirt or other particles. Fit the gas supply to the copper gas pipe of the heater with a compression fitting. The supply pipe must be positioned to ensure the heater can be removed for servicing.

Gas shut- off valve should be located in the vicinity of the water heater and all connections should be kept to a minimum.

WARNING: The operating pressure for the gas supply should be either 28-30mBar Butane or 30mbar/37mbar Propane.

Step 9 Mounting of Whale® control panel (see Figs. 17-19)

When mounting the Whale® control panel, find a suitable, convenient and accessible position. Ensure suitable access for wiring loom connection and cable. Note that the cable supplied to connect the control panel to the water heater is 3.5m long. The minimum depth behind panel for wiring must be 50mm. If using a control panel specific to the manufacturer or the vehicle, the electrical connections must be made in accordance with step 10.

The control panel requires a cut out 45mm high x 35mm wide. Feed the wires through the control panel mounting frame (see Fig.17) and line up the holes with the control panel. Feed the wires through the cut out in the wall and locate into desired position. Secure with 2 screws (No.4 x 3/4) provided, then clip on the surround frame.

In some instances, it may be necessary to make the wiring connections in step 9 before securing the control panel to the wall.

Please note: It may be possible to retrofit the Whale® control panel into existing frames.



Fig. 17

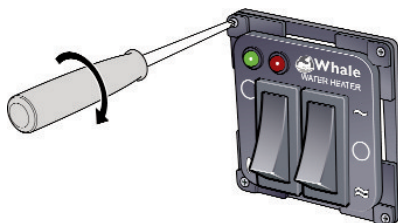


Fig. 18



Fig. 19

Step 10 Electrical connections 12V d.c.

Manufacturer Installation

WARNING: Always disconnect the appliance from the power supply prior to working on electrical components.

The Water Heater and control panel come complete with electrical connectors fitted.

The Whale® Water Heater and control panel are designed to be integrated into the caravan's wiring loom. The water heater is provided with a JST VL series 8 way socket, and the control panel with a JST VL 6 way socket. 6 wires are required to connect the water heater to the control panel, and 12V and 0V power supply are to be connected to the 8 way socket.

Please note: We recommend that a 5 amp fuse is fitted in the 12V supply.

Wire Number	Description	Wire Colour
1	Switch common	Brown
2	Burner switch	Blue
3	Immersion 1 switch	Green
4	Immersion 2 switch	Grey
5	Burner LED	Orange
6	Lockout LED	Violet
7	12v supply	Red
8	0v supply	White

Retail installation (see Fig. 20)

The Water Heater and control panel come complete with electrical connectors fitted.

Connect the 8 way electrical connector to the 8 way connector on the water heater, then route the wire to the control panel and connect the 6 way electrical connector to the 6 way connector at the control panel. Secure the 6 way wire close to the control panel ensuring that there is no strain on the wires at the switches. Connect the red flying lead coming from the 8 way connector to a 12V supply; then connect the white flying lead to the caravan 0V.

Please note: We recommend that a 5 amp fuse is fitted in the 12V d.c.supply.

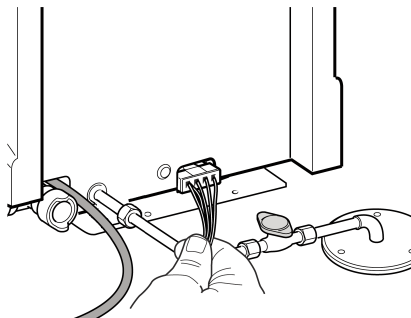


Fig. 20

Step 11 Electrical connection 230V

The appliance must be installed in accordance with the installation instructions and comply with any relevant regulations in the country where the appliance is installed. Electrical installation should be carried out by a suitably qualified electrician. The electrical supply must be connected to a 10 amp fused spur provided with an all-pole disconnection and the appliance must be earthed.

If the supply cord is damaged, it must be replaced and fitted by Whale®, a Whale® service agent or similar qualified person.

Manufacturer installation example (see Fig. 21)

The mains supply cable is supplied with a JST LP series socket (terminal pins are JST slm-61T-2.0) and must be mounted in a housing with strain relief to prevent accidental disconnection and prevent access to the connector.

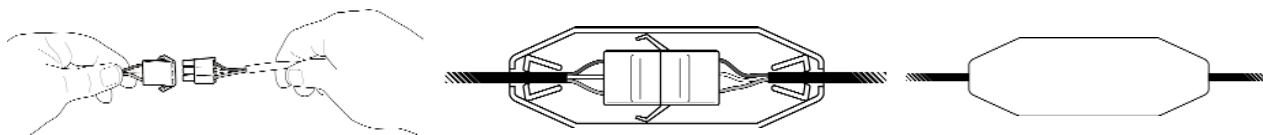


Fig. 21

Retail installation (see Fig. 22)

The Whale® Water Heater comes fitted with a 3 pin plug. We recommend that the socket is mounted vertically and away from potential exposure to water. If installation of an electrical socket is required, this must be carried out by an approved electrician. The plug is fitted with a 13 amp fuse.

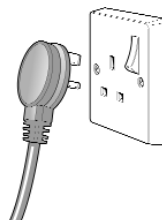


Fig. 22

Step 12 Connection to cold water supply (see Figs. 23 & 24)

The Whale® Water Heater is fitted with a Whale® 12mm Quick connect fitting on the cold water inlet to fit to Whale® semi rigid tubing. Various plumbing adaptors are included to assist with these connections as follows: To connect directly to 10mm (3/8") flexible tubing, use 3/8" Stem Adaptor (WU1280) and secure with a hose clip. For connecting to 13mm (1/2") use 1/2" Stem Adaptor (WU1282) and secure with a hose clip. For any other plumbing systems contact Whale® Support for further information.

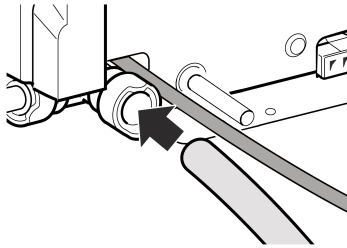


Fig. 23

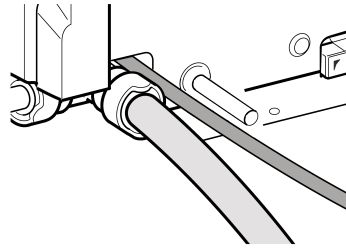


Fig.24

Important: Do not operate the appliance without the installed pressure relief device attached to the heater.

Please note: A non-return valve (not supplied) can be fitted before the pressure relief valve to prevent back flow of hot water to cold water taps.

Step 13 Connect hot water supply (see Figs. 25)

Screw in the braided hose supplied into the hot water outlet and tighten with a 19mm spanner. The outlet of the braided hose has a 12mm stem which can be connected to a number of different pipe systems with the included fittings as follows:-

To connect the braided hose to Whale® 12mm semi rigid tubing use Whale® Equal Straight fitting (WU1204) as shown Fig. 25. To connect directly to 10mm (3/8") flexible tubing, no additional fittings are required, push the hose over the 12mm nipple on the end of the braided hose and secure with a hose clip. For connecting to 13mm (1/2") flexible tubing use Equal Straight fitting (WU1204) and 1/2" Stem Adaptor (WU1282).

If you have any other plumbing system contact Whale® Support for further information.

Please note: The hot water **flexible braided hose must always be used** to ensure safe operation.

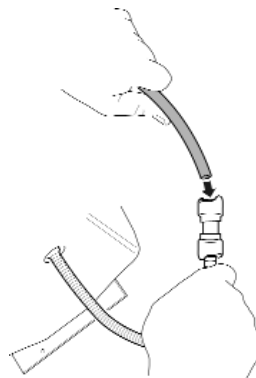


Fig. 25

Step 14 Completed installation (see Figs. 26 & 27)

Typical Manufacturer's Installation

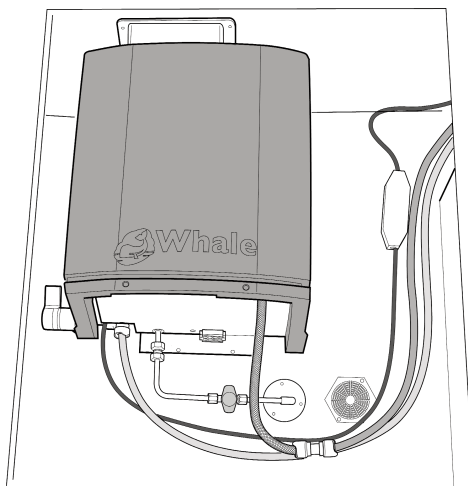


Fig. 26

Typical Retail Installation

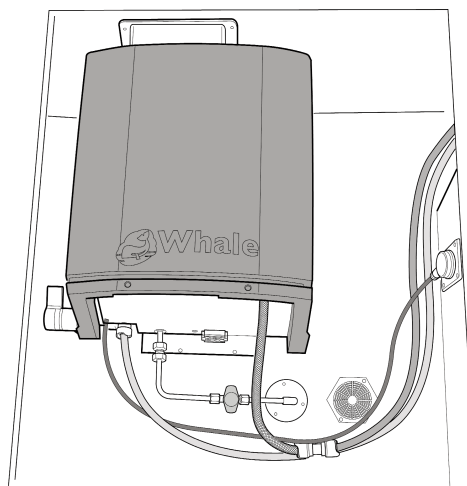


Fig. 27

Please note: After completing installation, carry out a full function check including gas soundness to ensure the appliance has been installed and operates correctly. The gas soundness check must be carried out by an accredited LPG gas engineer and a test certificate issued.

7. INSTRUCTIONS FOR USE

To the User: Read the following instructions carefully.



Observe all warnings.

Never operate the water heater without water in it. This appliance must not be connected directly to the mains water supply without a pressure regulator fitted, or any water supply greater than 190 kPa (1.9 bar). Ensure the caravan water system including water heater is full of water, and the vehicle is level before operating.

When using operating switches provided by the installer or manufacturer, they are responsible for providing user instructions and identification of symbols on the control panel.

OPERATING INSTRUCTIONS

For operation of the heater, a 12V d.c. supply must be connected at all times. To operate the heater's electric elements, it must also be connected to a suitable 230V a.c. supply.

Upon initial operation, or to refill after the system has been drained, check the drain valve is closed then fill the system with clean fresh water. To fill, open one hot tap and switch on the water pump. Leave the tap open to allow air to escape while the water heater is filling. Once water flows smoothly out of the hot tap, the water heater is filled. To allow the remainder of air to escape from the system open each hot water tap in turn until water flows smoothly.

Please note: In cold temperatures, the water in the supply pipework may freeze and prevent filling.

Check that all the gas and/or electricity supplies are turned on.

Gas operation. Operate the left-hand switch to the on (flame) position. There will be a pre-purge pause of approx. 5 seconds to allow any un-burnt gas to leave the flue. A green LED will light upon successful flame ignition. If there is air in the gas supply line it may take a few attempts for the gas to ignite. See section 9 for gas lockout re-setting. If the ignition is not satisfactory, the red LED will flash - refer to the trouble shooting guide (see section 9).

Electric operation. The water heater is equipped with twin 750W / 230V a.c. immersion heater elements offering operation at 750W or 1500W. Operate the right-hand rocker switch to the top position (~) to turn on one electric element. To turn on both electric elements, operate the right-hand rocker switch to the bottom position ≈

Note: The electric elements will still operate if the appliance is in gas ignition lock-out.

Gas and electric operation. For faster heating the appliance can be operated with both gas and electric.

Switching appliance off. Operate the left-hand gas switch to the top Off position (O) and the right-hand electric rocker switch to the centre position (O). If the heater is not going to be used for some time, isolate the gas supply and drain water if there is a risk of freezing.

Please Note: The water may drip from the discharge pipe of the pressure-relief valve during heating up. This pipe must be left open to the atmosphere, must be installed in a continuously downward direction and in a frost free environment. The pressure relief valve must be operated regularly (at least twice a year) by turning the yellow lever in the anti-clock wise direction, to remove lime deposits and to verify that it is not blocked.

General safety notes: The operating pressure of the gas supply to the water heater should be 28-30mbar Butane or 30-37mbar Propane.

8. MAINTENANCE

To clean and sterilise inside the water heater use diluted sterilising fluid and fully rinse through with clean water afterwards. The outside of the appliance should not normally require cleaning. If it does, isolate the electrical supplies and wipe down with a soft, damp cloth only. Allow to fully dry before reconnecting the electrical supplies. If descaling of this appliance is required, this can be done using a domestic liquid de-scaling product and fully rinse through with clean water afterwards.

The Whale® Water Heater should be checked periodically by a Whale® Authorised service engineer, or competent person, at least annually. This should be completed according to the practice in the country where it is used and according to the Whale® instructions. We recommend annual testing of gas soundness and combustion by an accredited LPG gas engineer.

9. TROUBLE SHOOTING

The heater is equipped with an electronic diagnostic system which will detect fault conditions ranging from poor gas or d.c. supply to internal heater malfunctions. In the event of a failure, the red light on the control panel will flash a number of times, pause, and repeat until switched off. Count the number of flashes and refer to the table below.

Number of flashes	Fault	Remedy
1	No flame detected	Check gas supply making sure there is gas in the bottle and no blockage in the gas line. Ensure propane is used at temperatures below +5°C. Clear lockout as described below.
2	Overheat	Check there is water in the appliance. We recommend you wait at least 5 to 10 minutes to allow the heater to cool before clearing lockout as described below.
3	Low/high supply voltage	Minimum operating voltage is 10V, maximum is 15V, when measured at the heater. Check battery voltage. If between 10V and 15V, check connections between heater and battery. Check alternator or external battery charging. Clear lockout as described below.
5	Other / internal fault	Attempt to clear lockout as shown below. If this fails, contact a Whale Authorised Service Engineer.

Gas lockouts

Gas lockouts must be cleared by moving the gas switch from on position to off position then back to the on position. The complete sequence of switch movements must be completed within 2.5 seconds for a lockout to be successfully cleared. If there is air in the gas line, e.g. after a gas bottle change, the water heater may require several attempts before it lights.

Other lockouts

If the lockout is caused when the unit is operated on electric, the lockout can be cleared by moving the electric switch from on position to off position then back to the on position. The complete sequence of switch movements must be completed within 2.5 seconds for a lockout to be successfully cleared.

Note: A cycling of the power supply to the unit will not clear a lockout. Some gas lockouts, e.g. ignition lockout will still permit use of the appliance in electric only operation.

If the problem persists contact **Whale® Support on +44 (0)845 217 2933**

10. WINTERISING / DRAINING

When using the heater in winter ensure the flue is not blocked by snow or fallen leaves etc. When not in use, ensure the heater is drained. This is particularly important during the winter months as a precaution against freezing. To drain, switch off the water pump at either the pump switch or main switch. Open all the hot water taps in the vehicle and operate the drain valve fitted in the system. The drain valve should be left in the open position to ensure all the water drains out.

11. SERVICE SUPPORT DETAILS

For installation or serviceable parts advice please contact Whale® Customer Support:

Tel: +44 (0)845 217 2933

Email: info@whalepumps.com

12. EU DECLARATION OF CONFORMITY

Description of Equipment: **Gas and Electric Storage Water Heater**

Manufacturer's Declaration

We hereby declare, under our sole responsibility, that the above equipment complies with the provisions of the following EC Directives:

Gas Appliance Directive 90/396/EEC on the approximation of the laws of the Member States relating to appliances burning gaseous fuels.

Low Voltage Directive 2006/95/EC on the harmonization of the laws of the Member States relating to electrical equipment designed for use within certain voltage limits.

Electromagnetic Compatibility Directive 2004/108/EC, on the approximation of the laws of the Member States relating to electromagnetic compatibility.

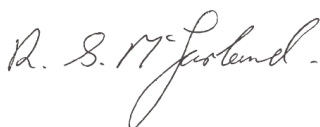
CE mark first affixed: August 2011

Basis on which conformity is declared

The above equipment meets the protection requirements of the EMC Directive and the principal elements of the safety objectives of the Low Voltage Directive.

Please contact Whale® if further details are required.

Signed



Stanley McFarland
Engineering Director

13. PATENTS AND TRADEMARKS

The Whale® Water Heater is protected by the following patent and design registration applications:

UK Patent application number: 0902533.9

14. WARRANTY

The Whale® Water Heater is covered by a 3 year warranty.

Please complete the enclosed warranty card and return to Whale.

For warranty details, please see the enclosed warranty statement.

Munster Simms Engineering Ltd.
Old Belfast Road, Bangor, N. Ireland BT19 1LT
Tel: +44 (0)28 9127 0531 Fax: +44 (0)28 9146 6421
www.whalepumps.com
Email: info@whalepumps.com